

Strengthening capacities of local actors in humanitarian response, preparedness, coordination and advocacy



Programme Summary



Caritas
Germany

Diakonie 
Katastrophenhilfe



**Malteser
International**
Order of Malta Worldwide Relief

Context

The humanitarian system seeks adequate answers to the immense and constantly growing humanitarian needs. As part of the local civil society, local actors are usually the first responders after a shock. Effectiveness and efficiency of humanitarian action can be improved through local knowledge, trust and other complimentary capacities, giving local actors an increasingly important role. While local and national humanitarian organisations provide an important work, they often still function as mere implementers of strategic and operational decisions taken by international humanitarian organisations.

It is therefore crucial to support local actors in their own operational preparedness and response capacity, their organisational and institutional ability, in the availability of adequate funding and integration in relevant humanitarian coordination mechanisms. Equally important is the transformation of roles between the different actors within the humanitarian system.

Programme set-up

For supporting local actors in strengthening their capacities in humanitarian response, preparedness, coordination and advocacy, four German humanitarian NGOs (Caritas Germany, Deutsche Welthungerhilfe, Diakonie Katastrophenhilfe and Malteser International) have agreed to work together in a localisation programme.

Country	Lead Organisation
Bangladesh	Malteser International
Colombia	Caritas Germany
DR Kongo	Diakonie Katastrophenhilfe
Ethiopia	Welthungerhilfe
Indonesia	Caritas Germany
Myanmar	Malteser International
Pakistan	Welthungerhilfe
Somalia	Diakonie Katastrophenhilfe

The programme will take place from March 2020 to February 2023 in altogether **eight countries** with funding from the German Federal Foreign Office (AA). Each consortium member will have the operational lead in two of the participating countries. In each of the eight participating countries up to five national organisations can participate in the programme as **Local Humanitarian Partners (LHP)**. They will have the opportunity to jointly develop and undertake capacity strengthening measures, in order to reinforce their institutional and operational

capacity to effectively respond to humanitarian crises.

Vision

In line with its spirit and vision, the programme has been called “ToGETHER - Towards Greater Effectiveness and Timeliness in Humanitarian Emergency Response”.

Together the 40 Local Humanitarian Partners and the four international consortium partners will create a space for establishing **complementary partnerships** and promoting **local**

partners' roles as leading local actors in humanitarian response, thus, putting **localisation** - understood as **transformationⁱ** - into practice.

ToGETHER! wants to move beyond organisational boundaries, allowing for all participating local and international partners to **jointly develop approaches to humanitarian challenges**. The programme is therefore equally an opportunity for consortium members to **learn from local partners** and to build lasting partnerships based on trust and respect. The programme and its success will thus depend on the active cooperation of all stakeholders in a spirit of mutual engagement.

Objectives of the ToGETHER! programme

Programme Outcome

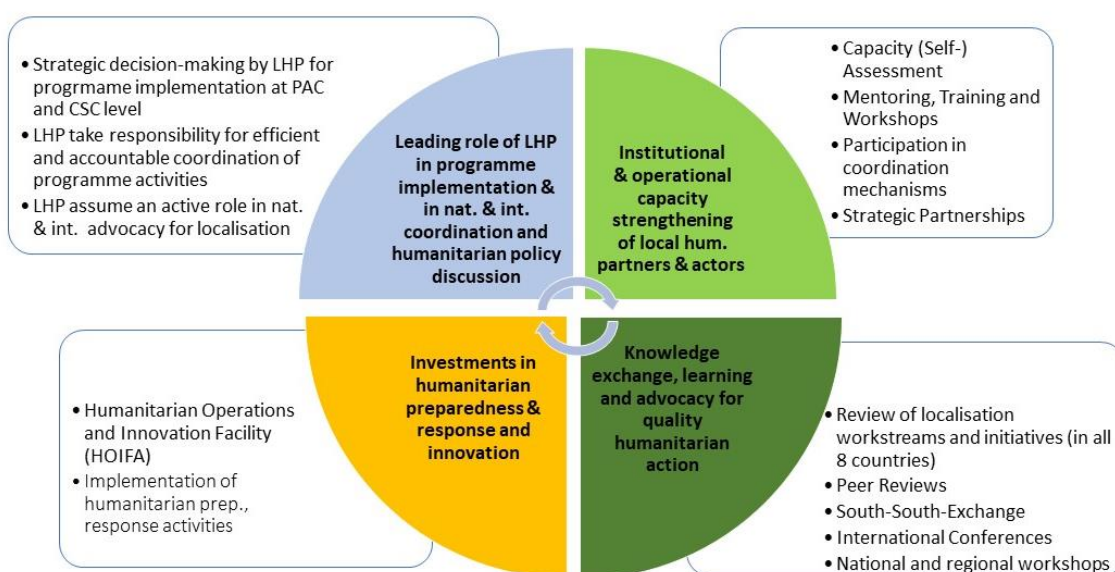
- Local Humanitarian Partners (LHP) of the Programme take responsibilities and actions in the humanitarian system of their countries for an effective and timely, accountable and principled humanitarian action

Starting with a review of the localisation workstreams and a mapping of the existing capacity development initiatives in the eight countries of operation, the programme will design and implement country-specific activities to increase the representation of local actors in the national humanitarian system and to shape their advocacy in relevant policy processes at country level as well as global level (like Charter4Change, Grand Bargain etc.).

After a capacity self-assessment, the 40 LHP will benefit from tailored trainings, workshops, mentoring and a strategic partnership with the four consortium partners.

The programme also includes a Humanitarian Operation and Innovation Facility (HOIFA), which provides financial support to partners for the implementation of one or more of the skills acquired during the programme period.

Reflection on roles and responsibilities, intense exchange of international and local humanitarian actors, evidence-based learning from LHP worldwide, continuous dialogue among involved stakeholders (international organisations, local organisations, donors and relevant networks) will be organised at national, regional and international level through workshops and conferences.



Participants

National and local humanitarian organisations will be engaged through an open call for expression of interest, to allow for a **transparent** and **inclusive approach** and broad audience to be reached.

A number of criteria have been set-up to assure that participating LHP are committed to the programme's vision and objectives, such as:

- Have the willingness and ability to further develop capacities in humanitarian response, i.e. have a basic institutional structure and the time to fully commit to the programme
- Have the willingness to actively engage in and contribute to the joint effort, share knowledge and participate in joint initiatives at the Country Steering Committee level
- Support a strategic approach beyond the survival and growth interest of the organisation

How will participating LHP benefit from the ToGETHER programme?

By taking part in the ToGETHER programme, Local Humanitarian Partners (LHP) will have the opportunity to further develop their humanitarian response capacity.

Capacity strengthening and exchange activities will be based on LHPs' **self-defined needs and priorities** and the larger humanitarian context in their countries. During the course of the programme LHPs will have **access to funding** for implementing innovative humanitarian approaches and applying acquired capacities in actual crises situations. In order to assure institutional capacity strengthening and learning, each participating LHP will further receive funding for the position of a capacity strengthening **focal point** based at their organisation, as well as an **administrative lump sum** and a contribution to their **operational costs**. The programme will further provide **technical support** and **advisory services** to LHP and facilitate the creation of **platforms for knowledge exchange, learning** and evidence-based **good practice**.

Consortium members have the opportunity to learn from the local partners and to support them with access to structured and long-term support.

Support Structure

Process and organisational structure at Country Level

In each of the eight programme countries the programme implementation will be led by one of the consortium partners. Each consortium member is responsible for establishing an operational structure in its two lead countries. Depending on the organisational structure of the lead organisation, this **Country Project Unit (CPU)** may be attached to the country office of a consortium member or a national organisation and is comprised of a **Country Project Coordinator (CPC)**, a **Process & Finance Administrator** and a **MEAL Advisor**.

The **CPC** facilitates the cooperation at country level between the 5 participating Local Humanitarian Partners in order to enable a productive and transparent joint capacity strengthening process which is beneficial to all participants. S/he will support the implementation of the different stages, particularly by providing guidance on the overall framework and formats that will be provided by the **Programme Management Unit (PMU)** and assure reporting and financing requirements of the donor.

The leading body at the country level will be the **Country Steering Committee (CSC)**, comprised of one member from each of the five participating LHPs. Based on the global operational framework provided by the PMU, in the inception phase a key task of the Country Steering Committee is to jointly develop a work plan for a country programme that gives all partners equal access to the opportunities and resources of the programme. Furthermore, the Country Steering Committee advises the CPC and provides the link to the participating LHP.

Based on identified country-specific priorities, a joint **capacity strengthening plan** will be set up. The plan will be implemented in the course of the programme, using different means of external and peer-to-peer training, mentoring and practical application.

Organisational structure at the Global Level

In order to implement the programme, on a global level the four Consortium Partners will set up a **Programme Management Unit (PMU)** at the headquarter of Welthungerhilfe as the consortium lead. This PMU will be comprised of a Programme Coordinator, a Process & Finance Administration Manager and a MEAL Coordinator.

The PMU is responsible for ensuring contractual and general compliance of the consortium programme. In addition, the PMU is in charge of global monitoring of the programme implementation, as well as coordinating global learning, knowledge management and advocacy activities within the ToGETHER! Programme.

The PMU will be advised and supervised by a **Programme Advisory Committee (PAC)**, composed of 12 members: one representative from each consortium member and one representative from each of the eight Country Steering Committees. This is to ensure that concerns raised in the Country Steering Committees will be taken into account at the programme level and in larger strategic decisions.

Consortium Focal Point

In order to facilitate and support the localisation agenda within their own organisations and to provide a technical and advisory link between global and country level, each consortium member will have a **Consortium Focal Point**. S/he will be based in the structure of the respective consortium member at HQ.

ⁱ i.e., ToGETHER supports local partners to become operationally and financially independent of intermediaries and represent themselves in local and international (humanitarian) networks and clusters.