

Strengthening Regional Responses to the Rohingya situation

Regional Humanitarian Partnership Week in Bangkok
11-13 December 2023



Razia Sultana
Society

Rohingya history and their persecution

The Muslim community is the Rohingya.



Who are the Rohingya?

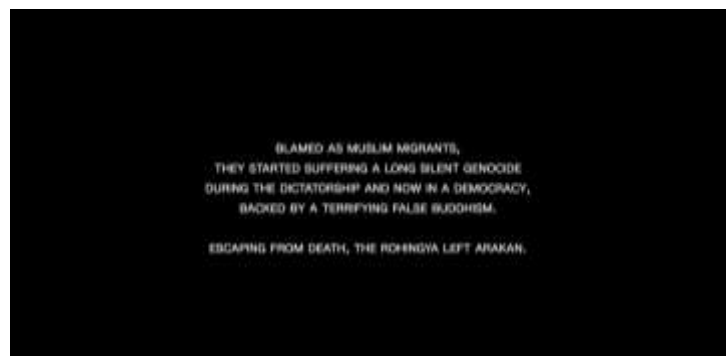
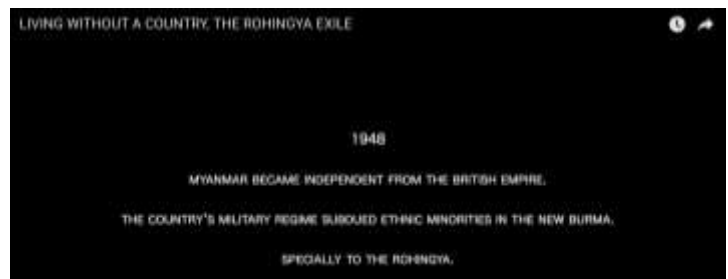
- Arakan was independent and sovereign kingdom for centuries
- It was an independent kingdom between Southeast Asia and the Indian subcontinent
- Burmese intruded Arakan and occupied
- Arakan again become independent
- Again Occupied during the British era

Rohingyas are not Bangalese, they are from Arakan or Rakhaine state

Sufferings & slow genocide

Slow genocide started with

- Limiting access to Education
- Limiting Rights
- Restricting Movement
- Limiting Earning source
- Rape
- Arson, etc.

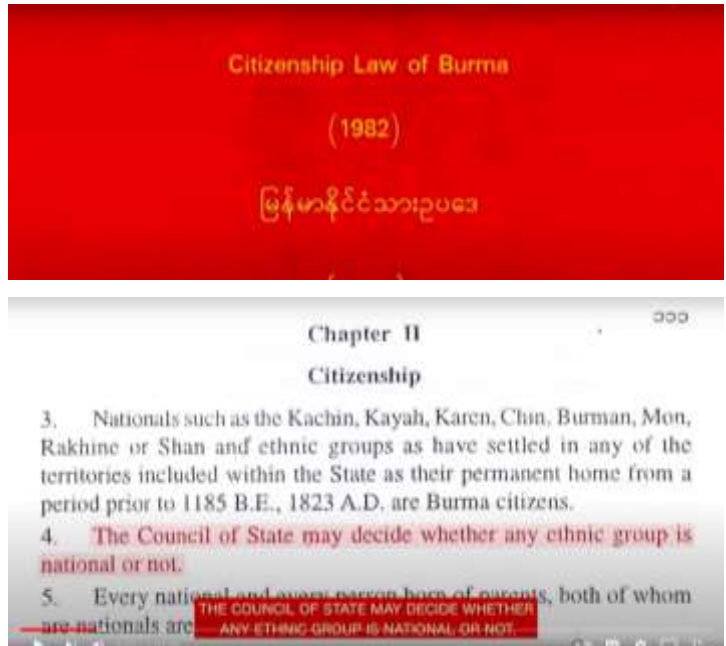


Remove the Rohingya, especially the Muslims

Citizenship revoked and denied

After 1982

Ultra nationalist, Buddhism and Burmese



History of persecution

- 1785 (Arakan was over swept by the Bamar)
- 1799
- 1971
- 2012
- 2016
- 2017

80% of the Rohingya people are out of the country



Case in International Court of Justice- ICJ

- **International Court of Justice**
 - Time process e.g. Russia vs. Myanmar.
 - Financial crunch
- Also irony when international countries are investing in Myanmar!



For the first time, Bangladesh seeks foreign loans to support Rohingyas

\$1 billion sought from WB and ADB - \$535 million in loans and \$465 million in grants



The Business Standard, 04.12.2023

Bangladesh has done an incredible thing but now in challenge

Funding shortfalls also forced WFP to cut its food vouchers from US\$ 12 to US\$ 8 per person per month in Cox's Bazar camps.

Way forward

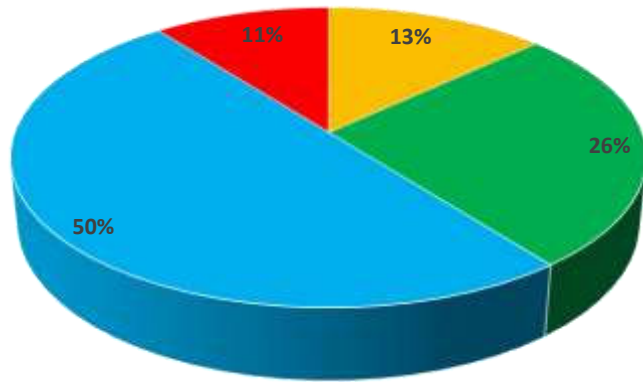
- Strengthen advocacy with ASEAN Intergovernmental Commission on Human Rights
- Advocacy with ASEAN Commission on the Promotion and Protection of the Rights of Women and Children.
- Linking them with the democratic movement, e.g. NUG, AA, PDF.
- Advocacy for Rohingya citizenship, Rights and dignified repatriation.



Strengthening Regional Responses to the Rohingya situation

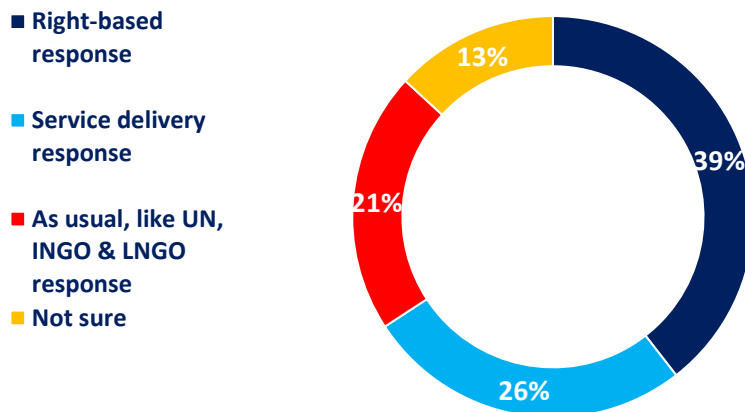
Survey findings

Types of NGO participated in the survey...

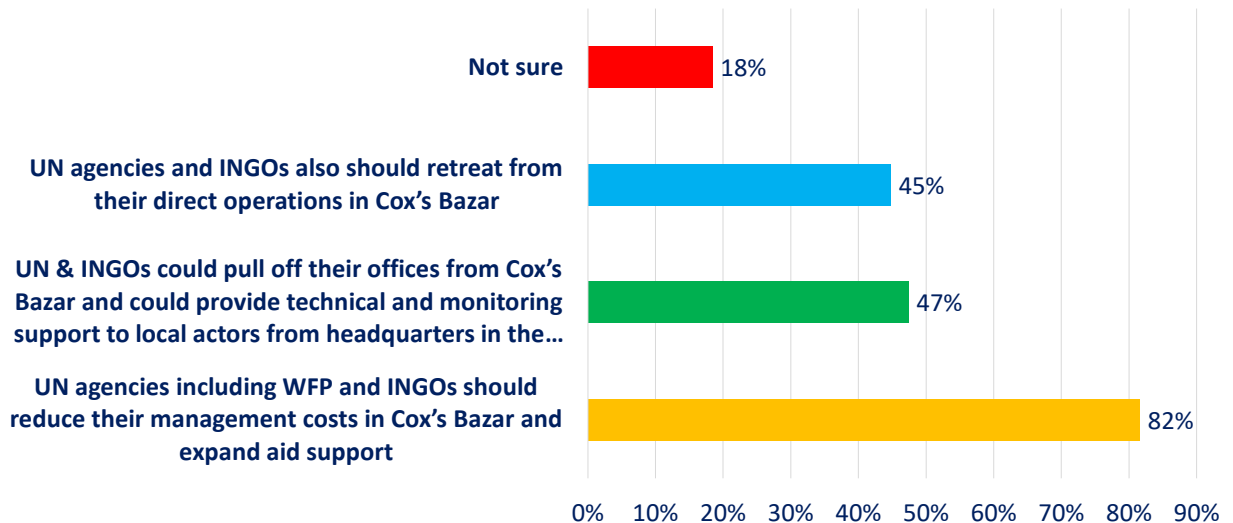


■ International NGO ■ Local NGO ■ National NGO ■ Other

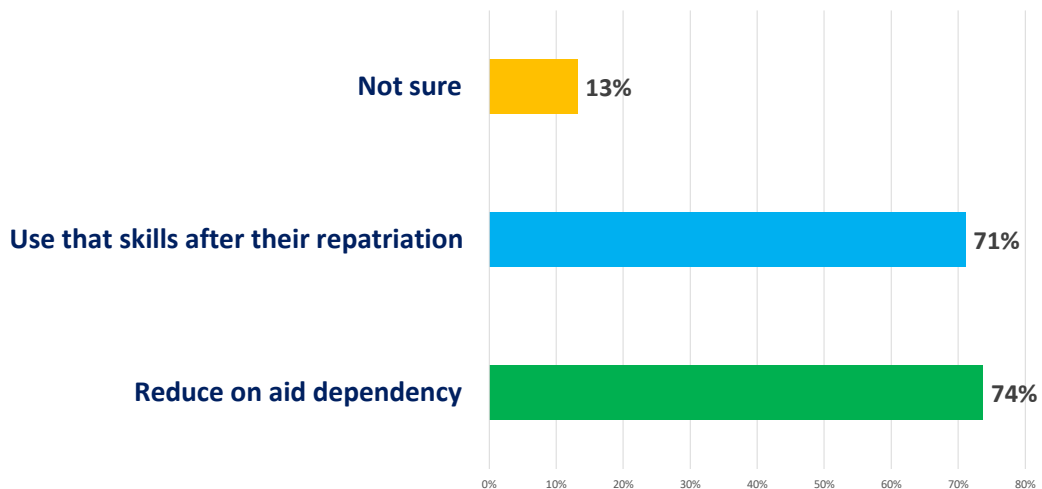
1. In your opinion, Rohingya response in Bangladesh should be like...



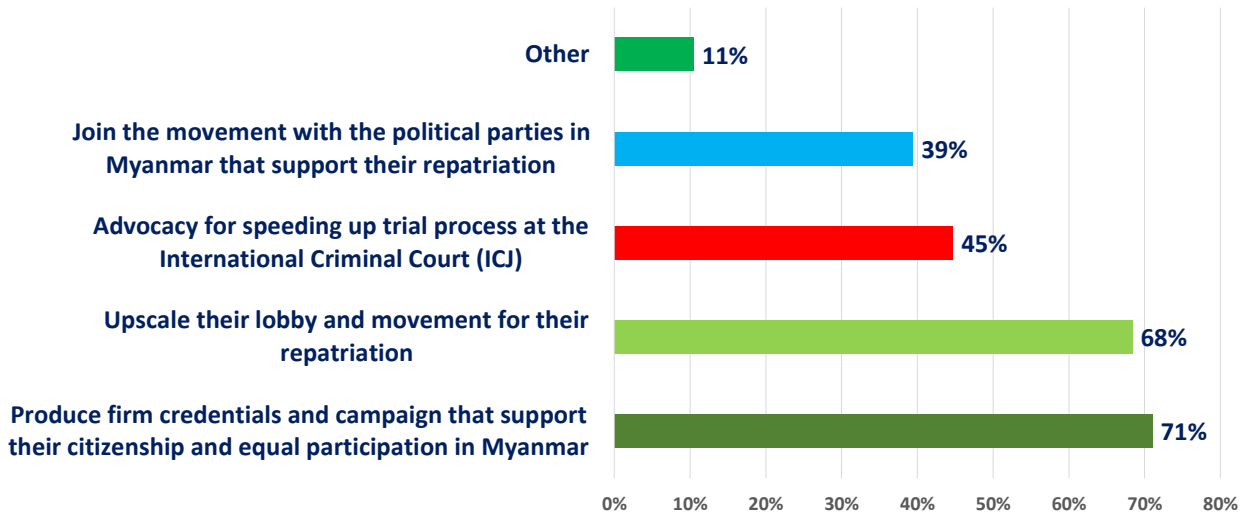
2. Funding shortfalls forced WFP to cut its food vouchers from US\$ 12 to US\$ 8 per person per month in Cox's Bazar camps. In your opinion what could be the possible options to remain with food support that previously stood at US\$ 12 (multiple choice).



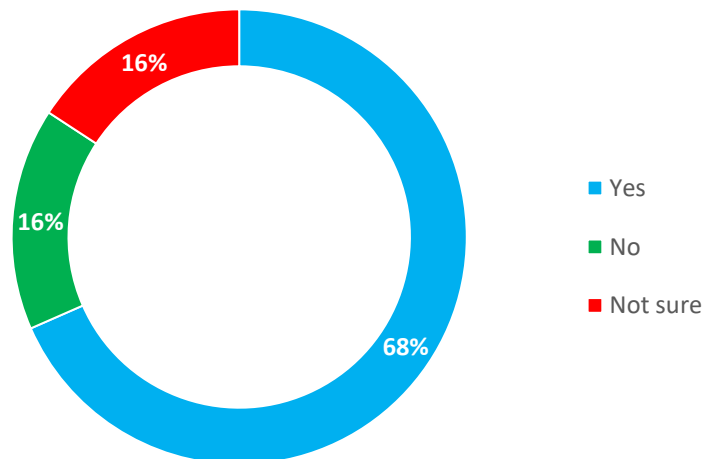
3. Do you think Rohingya community should also be trained to develop their skills with the aim of gaining necessary skills to- (multiple choice)



4. Do you think Rohingya community and their CSOs, both at home and abroad should- (multiple choice)?



5. Do you consider Rohingya people in Cox's Bazar should have access to higher education until their safe repatriation?





Thank you